

Using MySkillsTutor

MySkillsTutor is a web-based application that enables students to complete exercises that test their skills in a variety of subjects and develop their knowledge of those subjects by working in an interactive, computer-based learning environment.

Your instructor may assign specific activities for you to work on, or you may browse through the available exercises on your own for extra practice. While some classes may work on MySkillsTutor in the Learning Lab, students are also able to access the application from off-campus through any web-enabled computer.

This handout provides basic login information to help you get started. For additional help, please speak with your instructor or a Learning Lab technician.

Accessing the MySkillsTutor website

- 1) Open your web browser
- 2) Navigate to <http://www.MySkillsTutor.com>
- 3) Enter your user name and password, which will likely be the same as you use to log onto campus computers

Note: Your password will likely be your month and day of birth (in 4-digit format). For example, the password of a student born on June 1, 1988 would be *0601*.
If you receive an error message, please see the following page for solutions

- 4) Enter *henry06* for the site and click the “Log In” button

SkillsTutor Log In - Microsoft Internet Explorer

File Edit View Favorites Tools Help

Back Forward Stop Home Search Favorites Refresh Print Mail News RSS Feeds

Address http://www.myskillstutor.com/login.jsp Go Links Google For Faculty & Staff

Google Search Web 1421 blocked

SkillsTutor
A DIVISION OF HOUGHTON MIFFLIN

Please type your login information.

Log In
Clear

Home
Tip

User Name:

Password:

Site:
henry06

Log In

Play audio in Spanish (when it is available).
Note: Audio preference must be selected every time you log in.

© 2000 - 2006 Achievement Technologies, Inc. All rights reserved.
All trademarks are the property of their respective owners. [Privacy](#)

If you receive an error message

There are several reasons why you may be unable to log in. Try the following solutions first. If these do not work, ask your instructor or a Learning Lab technician for assistance.

Make sure you entered your login information correctly

- Did you enter the correct Henry Ford user name? Students' user names do not always follow the same format. Some use the first initial and last name, some include the middle initial, and some may be followed by numbers:

EXAMPLES

Kevin Shawn Rozinski	might have a username of	krozinski
Tiffany Ann Kline	might have a username of	takline
Robert Timothy Smith	might have a username of	rsmith01647

- Did you use the correct format for the month and day of your birth? Your password may be a four-digit number. Be sure to include leading zeroes for numbers less than 10.

EXAMPLES

June 18th	=	0608	(June is the sixth month)
December 4 th	=	1204	(include the zero before the 4)

- Did you use the correct site name? Be sure you typed *henry06*.

Try logging in using the username and site fields only

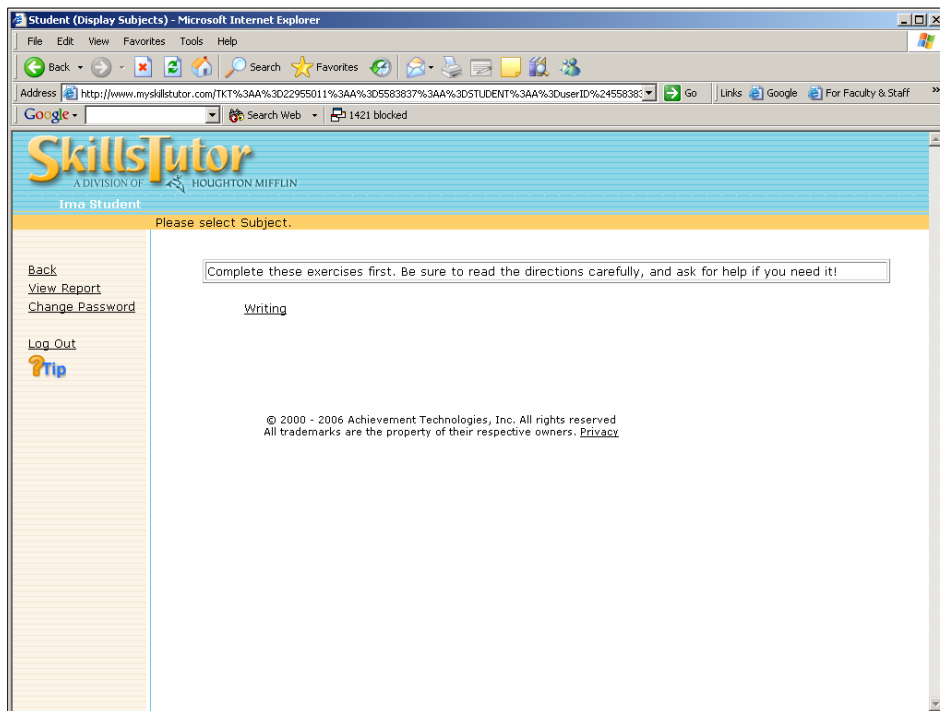
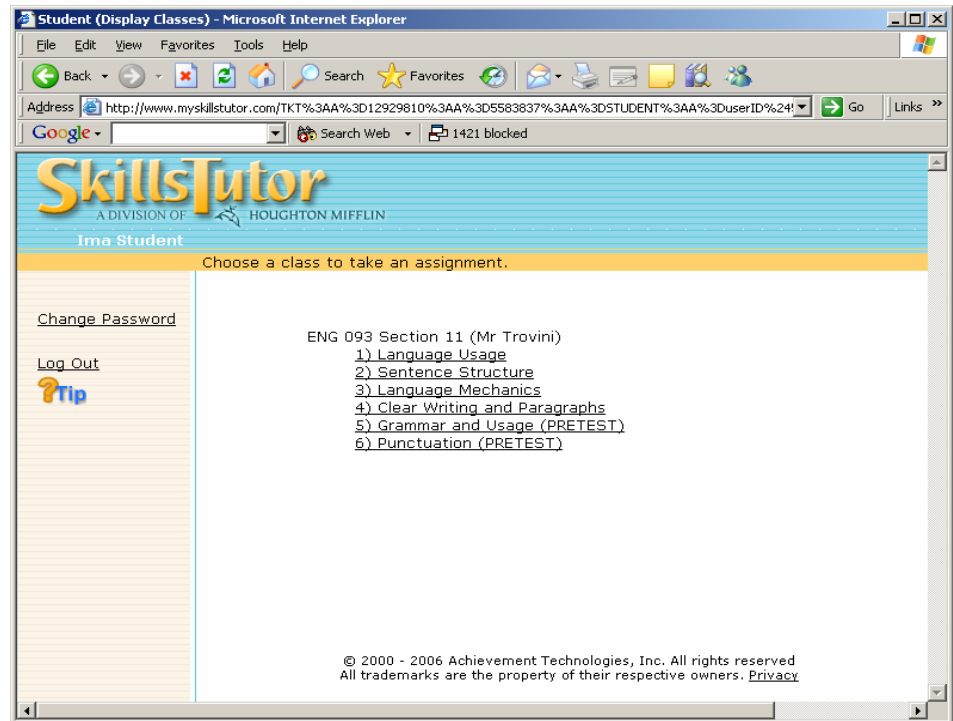
First time users into MySkillsTutor may not have passwords set up. If this is the case for you, log in by entering your user name and the site name (*henry06*) only; leave the password field blank.

If this works, you will be asked to verify your name...

... and then enter a new password. For the sake of consistency, you might simply make your password the month and day of your birth in 4-digit format (see above).

Selecting an Assignment

If your instructor has created assignments for you, you will be able to select and begin working on an assignment once you have logged in. In this example, Mr. Trovini's English 093 class has been assigned work in six different areas.



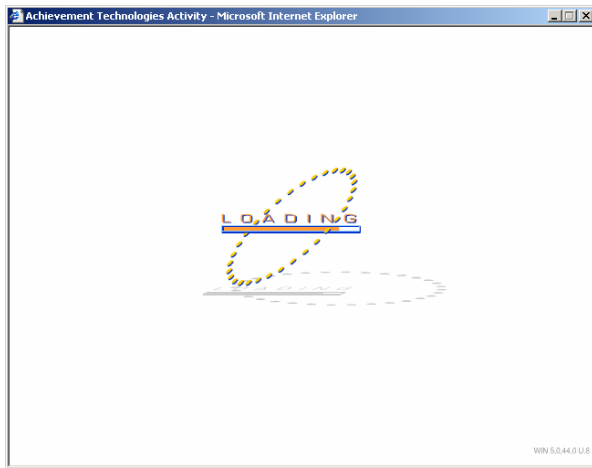
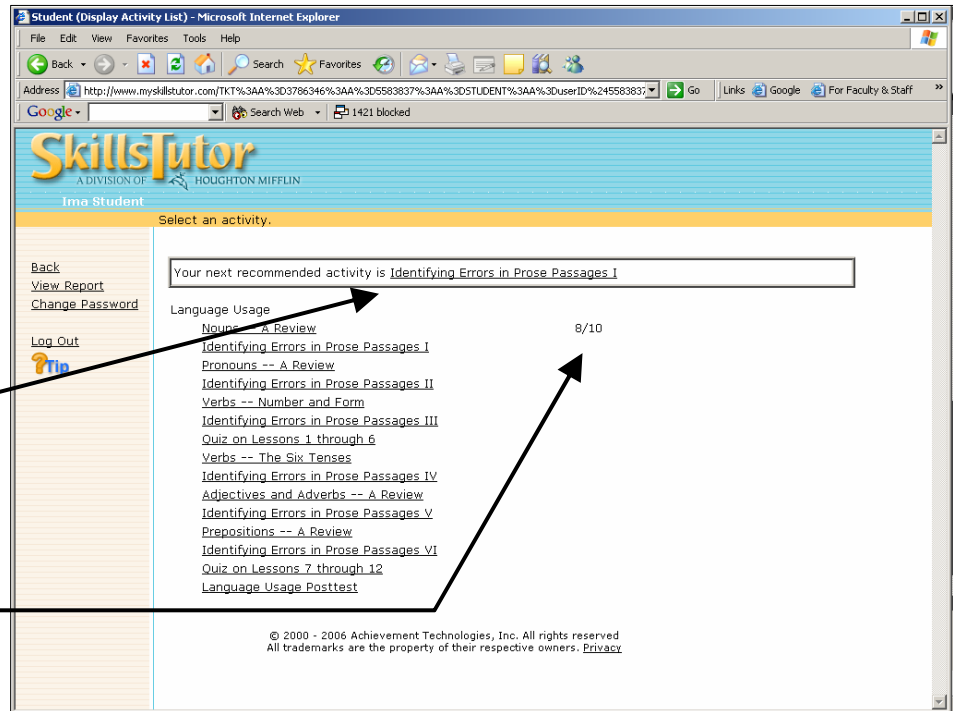
Clicking on one of the options listed will display a set of instructions for the unit. This example shows the screen that would appear for a student who selected *1) Language Usage* from the options above.

Notice that the instructor has provided instructions for the student, which appear in a text box. The assignment, from the *Writing* section, can be opened by clicking the link below the instructions.

In the screen that opens, you will see a list of available activities for that unit.

The box at the top of the screen will tell you which one you should work on next.

If you have already completed an activity, your score will appear to the right of that activity on the list.



Clicking on the activity name will open the assignment in a separate window. You may have to wait a few moments while the program loads.

When the activity has loaded, you are ready to begin! Click the screen where indicated and you'll be on your way.

